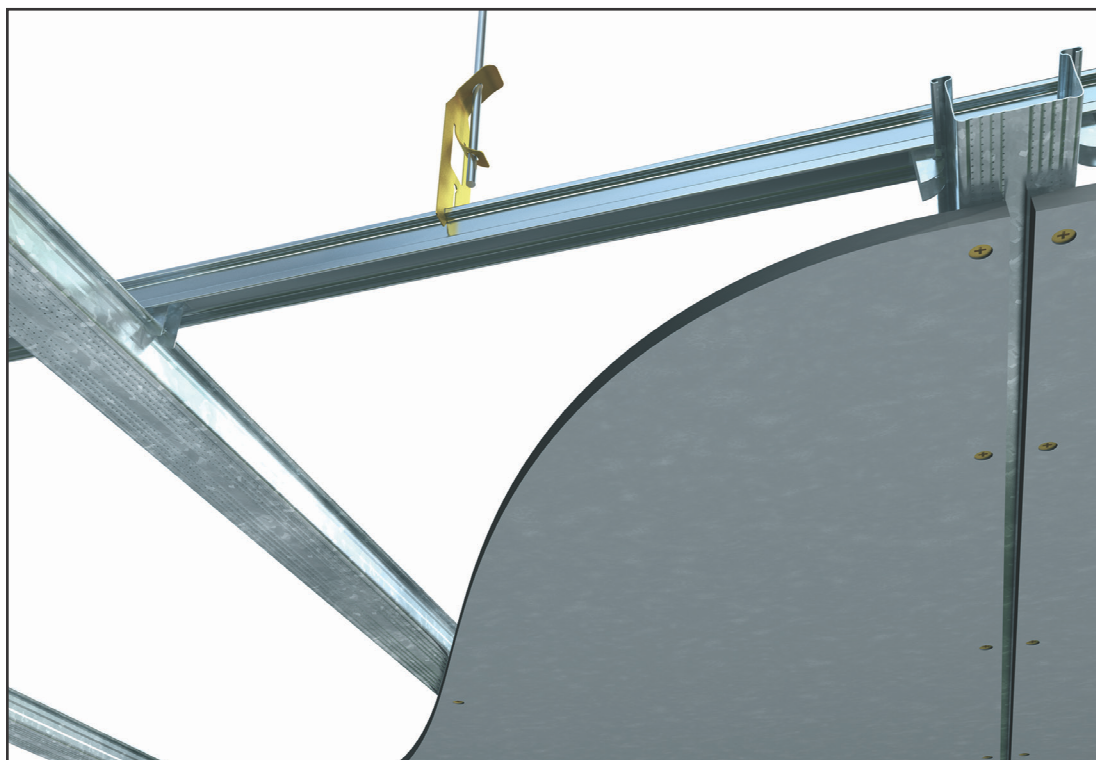


Introducing Rondo's new Internal Express Joint Wall and Ceiling System



KEY-LOCK®
Express Joint Wall System
Installation



KEY-LOCK®
Express Joint Ceiling
System Installation

Rondo Internal Express Joint Wall and Ceiling System

Rondo's new I55 Express Joint Furring Channel, together with three complementary clips, join Rondo's existing KEY-LOCK® range to create a 10mm-wide architectural feature which achieves a stylish finish to both wall and ceiling for internal applications.

The 10mm-wide central strip on the Furring Channel works as a practical guide when spacing the sheets, whilst the overall width of the product provides the appropriate fixing margin for the board. The Rondo head ensures safer handling and positive secure location in the appropriate clip, without requiring any mechanical fixing.

Designed for interior installations, the Express Joint Wall and Ceiling System can be used externally, however advice should be sought from Rondo to determine appropriate fixing information and advice on potentially corrosive environments.

The introduction of Rondo's Express Joint Wall and Ceiling System includes the release of three new clips specifically designed to accommodate the I55 Furring Channel in wall and ceiling applications.

- The I55 Express Joint Furring Channel can be fixed to a masonry wall with the I57 Direct Fix Clip (see Figures 1&5).
- The I59 Joiner allows the I55 Furring Channel to be attached to KEY-LOCK® Top Cross Rail primary suspension members for use in ceiling situations (see Figure 2).
- The I56 Direct Fix Clip is able to fix the I55 Furring Channel to steel purlins or timber joists in ceiling applications as well as to steelgirts or timber stud work in walls (see Figures 3&4).

The KEY-LOCK® Express Joint Wall and Ceiling System is manufactured in Australia from G2 Z275 Galvabond steel and complies with all relevant standards.

For more information on the KEY-LOCK® Express Joint Wall and Ceiling System, visit www.forman.co.nz or contact one of our Technical Representatives at your local Forman branch on 0800 45 4000.



FIGURE 1

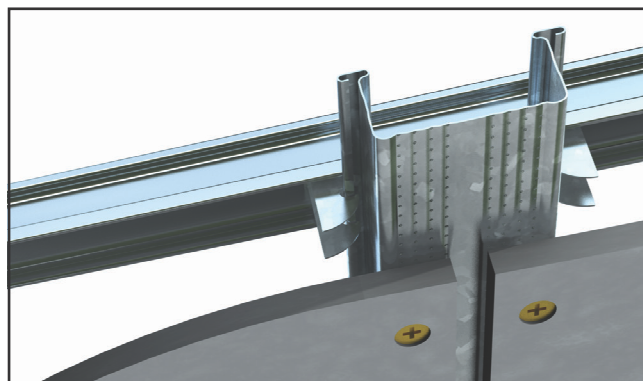


FIGURE 2

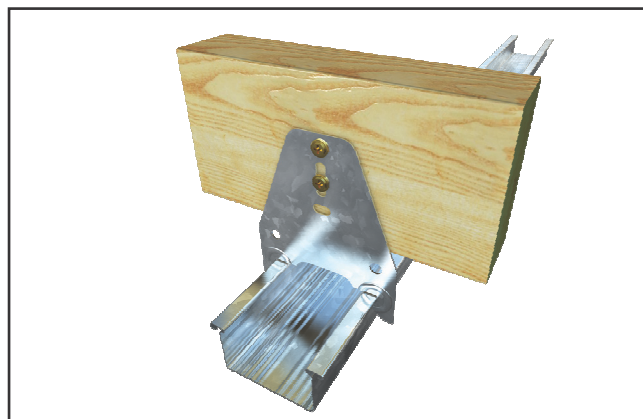


FIGURE 3

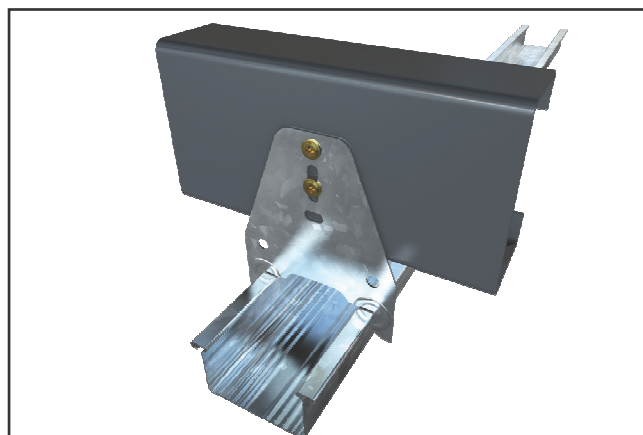


FIGURE 4

Rondo Internal Express Joint Wall and Ceiling System

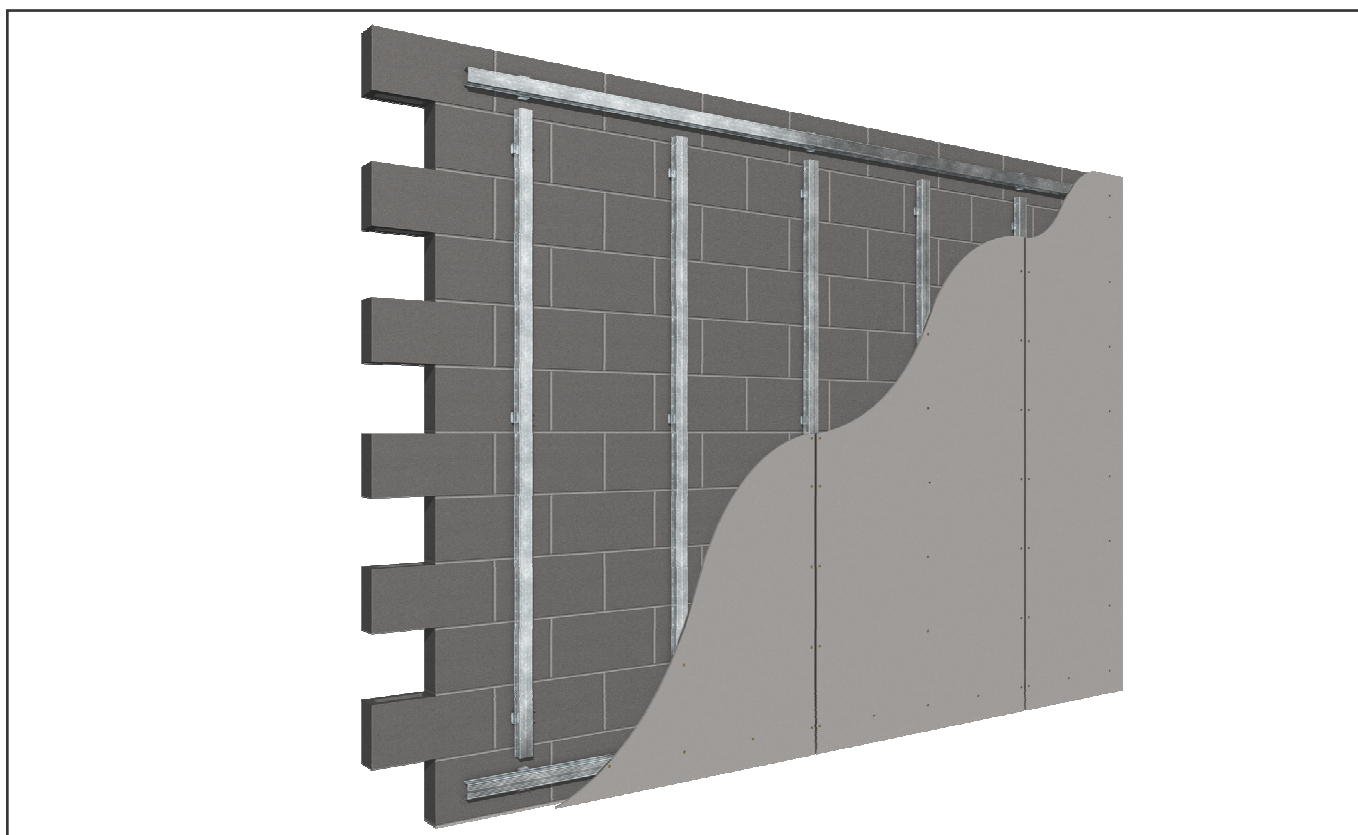
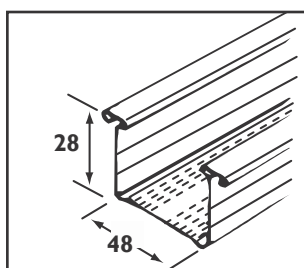
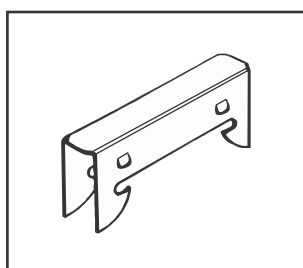


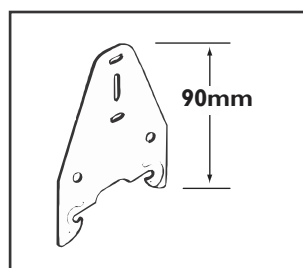
FIGURE 5: Typical Wall Installation of KEY-LOCK® Express Joint Wall System



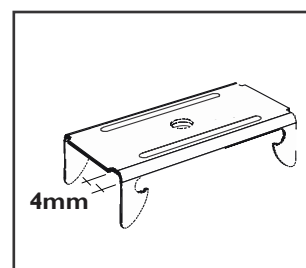
155 Furring Channel



159 Joiner



156 Direct Fix Clip



157 Direct Fix Clip

The table below provides the description and dimensions of each product in the KEY-LOCK® Express Joint Wall and Ceiling System. Please turn overleaf for the Maximum Span Table information.

Part Number	Description	Length	Weight	Stock Pack	Sub Pack
155	Wide Furring Channel	4800mm	2.62	120	4
		6000mm	3.27		
156	Direct Fix Clip to Timber/Steel		0.03	300	N/A
157	Direct Fix Clip to Masonry		0.03	400	
159	Primary to wide secondary Joiner		0.02	500	

Introducing Rondo's new Internal Express Joint Wall and Ceiling System

SPAN TABLES: DIRECT FIX I55 EXPRESS JOINT FURRING CHANNEL

Table 2: N2 (W33) Wind Loading					Table 3: N3 (W41) Wind Loading				
Cladding Details	FURRING CHANNEL SPACING				Cladding Details	FURRING CHANNEL SPACING			
	SINGLE SPAN		CONTINUOUS SPAN			SINGLE SPAN		CONTINUOUS SPAN	
	450	600	450	600		450	600	450	600
1 x 10mm Plasterboard	1740	1600	2160	1960	1 x 10mm Plasterboard	1690	1530	1890	1590
1 x 13mm Plasterboard	1620	1480	2000	1840	1 x 13mm Plasterboard	1620	1480	1830	1540
1 x 16mm Plasterboard	1460	1330	1810	1650	1 x 16mm Plasterboard	1460	1330	1770	1480
2 x 13mm Plasterboard	1310	1190	1620	1480	2 x 13mm Plasterboard	1310	1190	1620	1360
2 x 16mm Plasterboard	1170	1070	1450	1320	2 x 16mm Plasterboard	1170	1070	1450	1280

Notes:

- Wind loading to AS4055 as follows: N2:Vhu = 40m/s Vhs = 26m/s Cpi = -0.3
N3:Vhu = 50m/s Vhs = 32m/s Cpi = -0.3
- Ultimate limit state: LC1: 1.2G + Wu
- Serviceability limit state: LC2: G - Limit L / 600 LC3: G + Ws - Limit L / 200 to AS1170.0
- N2 wind loading was previously W33, and N3 wind loading was previously W41.
- The above tables are for internal ceilings in non-cyclonic regions.

SPAN TABLES: CEILING INSTALLATION WITH KEY-LOCK® TOP CROSS RAIL

Table 4 : Maximum Ceiling Load – Span of Top Cross Rail: 1200mm			Table 5 : Maximum Ceiling Load – Span of Top Cross Rail: 1200mm		
Spacing of 127 standard Top Cross Rail	FURRING CHANNEL SPACING		Spacing of 128 heavy duty Top Cross Rail	FURRING CHANNEL SPACING	
	450	600		450	600
	ALLOWABLE CEILING WEIGHT kg/m²			ALLOWABLE CEILING WEIGHT kg/m²	
	I 55 FURRING CHANNEL			I 55 FURRING CHANNEL	
900	27	27	900	50	50
1200	19	19	1200	37	37
1500	15	15	1500	21	15
1800	9.1	5.9	1800	9.1	5.9

Notes :

- The above tables give the allowable dead load for the various ceiling configurations. The calculated ceiling weight therefore does not have to be factored in accordance with AS/NZS 2785.
- Connections to be independently checked.
- Deflection limited to L/360.
- Lining contribution has been ignored in analysis.
- Refer to details on Page 11 for external suspended ceiling systems.
- Ultimate limit state: 1.4G + 1.7U. Serviceability limit state: G + U.

For more information on the KEY-LOCK® Express Joint Wall and Ceiling System, visit www.forman.co.nz or contact one of our Technical Representatives at your local Forman branch on **0800 45 4000**.

RONDO®
www.forman.co.nz

RONDO is a registered trademark of Rondo Building Services Pty Ltd. ABN 69 000 289 207.