



**FORMAN**  
BUILDING SYSTEMS

*Product Data Sheet*

# **FIREFLY**

## **FIRE AND SMOKE BARRIER**

**TBA FIREFLY** Fire and Smoke barriers are designed to halt the passage of smoke and flame by providing either 30, 60 or 120 minutes Integrity (FRR-/30/-,-/60/-,-/120/-), including top and side fixings, all jointed areas and where services penetrate the barrier.

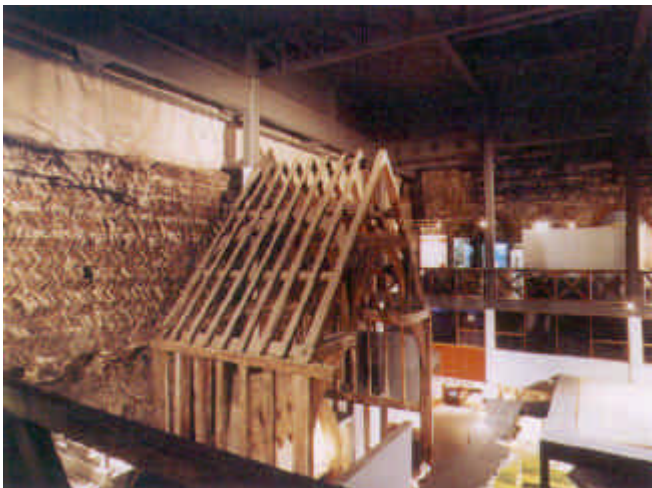
**TBA FIREFLY** Fire and Smoke barriers are manufactured from clean, non-respirable, lightweight and flexible material. They are quick and easy to install, utilising standard equipment and simple fitting procedures.



A cost effective and clean solution to Fire and Smoke barrier problems Large areas can be quickly protected.

**TBA FIREFLY** Fire and Smoke barriers have been successfully tested to BS476 Parts 20 and 22 in accordance NZBC C/AS1 Part 6 "Control of Internal Fire and Smoke Spread".

- Integrity of the barrier incorporating vertical and horizontal joints.
- Maintenance of integrity where services penetrate the barrier.
- Use of the barrier either vertically or horizontally.
- Maximum drop 6-7 metres.
- BRANZ Letter of Opinion FAR



A Fire and Smoke barrier with aesthetic appeal.

### **FIREFLY SYSTEM**

The Firefly system is fully tested at Namas approved test houses.

The tests performed on TBA Firefly using the same configuration as found in a real life situation. Top fixings, side fixings, jointing of adjacent barriers and penetrations through the barrier have all been evaluated.

In this way those specifying, installing and inspecting TBA Firefly Fire and Smoke barriers can be confident of the barriers' performance.

## FITTED WITH EASE

Firefly Fire and Smoke barriers are quick to install. Forman Building Systems offers a training programme, which assists contractors to maximise the benefits of this effective fire and smoke protection.

## PENETRATION MANAGEMENT

Close attention has been paid to both open and closed penetrations which may pass through the installed barrier. The Firefly penetration management system, incorporating the use of effective and quick to install flexible collars, ensures integrity is maintained and can significantly reduce overall fitting times.

## FITTING INSTRUCTIONS

Full fitting instructions for Firefly Fire and Smoke barriers including penetration management are detailed within the Firefly installation manual.

## TECHNICAL DATA

Firefly Fire and Smoke barriers are available in convenient packs sizes.



	LENGTH	WIDTH	AREA	THICKNESS	WEIGHT	WEIGHT PER m <sup>2</sup>
<b>FIREFLY 30</b>	25 metres	1.0m	25m <sup>2</sup>	0.5mm	14.5kg	580g/m <sup>2</sup>
<b>FIREFLY 1</b>	25 metres	1.0m	25m <sup>2</sup>	1.3mm	22.5kg	900g/m <sup>2</sup>
<b>FIREFLY 2</b>	25 metres	1.0m	25m <sup>2</sup>	1.3mm	22.5kg	900g/m <sup>2</sup>

## SPECIFICATION DETAIL

### 30 Minute Barrier

TBA Firefly specification

TBA Firefly 30

**FRR -/30/-**

- Inherently resistant to smoke penetration
- Installed according to manufacturer's instructions ensuring the barrier is positively fixed to perimeters, secured around penetrations collared.
- It is recommended that trained installers are employed to fit the barrier.

### Generic Specification

30 Minute Fire and Smoke Barrier

A woven fire and smoke barrier manufactured from non respirable materials weighing no more than 600g/m<sup>2</sup> and having a maximum thickness of 1mm.

- Providing 30 minutes Integrity across its full surface areas, including overlapping joints and penetrations, when tested to BS476 parts 20 and 22. The barrier must be inherently resistant to smoke penetration and be manufactured from Class O materials. Installed ensuring the barrier is positively fixed to perimeters, secured around penetrations, penetration collared, following manufactures instructions. It is recommended that trained installers are employed to fit the barrier.

### 60 Minute Barrier

TBA Firefly specification

TBA Firefly 1

**FRR -/60/-**

- Inherently resistant to smoke penetration
- Installed according to manufacturer's instructions ensuring the barrier is positively fixed to perimeters, secured around penetrations collared.
- It is recommended that trained installers are employed to fit the barrier.

### Generic Specification

60 minute Fire and Smoke Barrier

A woven fire and smoke barrier manufactured from non respirable materials weighing no more than 1000g/m<sup>2</sup> and having a maximum thickness of 1.5mm.

- Providing 60 minutes Integrity across its full surface areas, including overlapping joints and penetrations, when tested to BS476 parts 20 and 22. The barrier must be inherently resistant to smoke penetration and be manufactured from Class O materials. Installed ensuring the barrier is positively fixed to perimeters, secured around penetrations, penetration collared, following manufactures instructions. It is recommended that trained installers are employed to fit the barrier.

### 120 Minute Barrier

TBA Firefly specification

TBA Firefly 2

**FRR -/120/-**

- Inherently resistant to smoke penetration
- Installed according to manufacturer's instructions ensuring the barrier is positively fixed to perimeters, secured around penetrations collared.
- It is recommended that trained installers are employed to fit the barrier.

### Generic Specification

120 minutes Fire and Smoke Barrier

A woven fire and smoke barrier manufactured from non respirable materials weighing no more than 1000g/m<sup>2</sup> and having a maximum thickness of 1.5mm.

- Providing 120 minutes Integrity across its full surface areas, including overlapping joints and penetrations, when tested to BS476 parts 20 and 22. The barrier must be inherently resistant to smoke penetration and be manufactured from Class O materials. Installed ensuring the barrier is positively fixed to perimeters, secured around penetrations, penetration collared, following manufactures instructions. It is recommended that trained installers are employed to fit the barrier.

The information in this leaflet is issued in good faith.

Forman Building Systems Ltd can accept no responsibility for omissions or errors in content or interpretation.



**CALL FREE NATIONWIDE 0800 45 4000**

**AUCKLAND**  
09 276 4000

**HAMILTON**  
07 850 8395

**ROTORUA**  
07 348 2733

**WELLINGTON**  
04 568 7132

**CHRISTCHURCH**  
03 379 9329

**DUNEDIN**  
03 474 1800

[www.forman.co.nz](http://www.forman.co.nz)