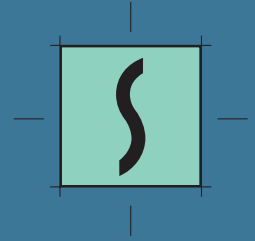
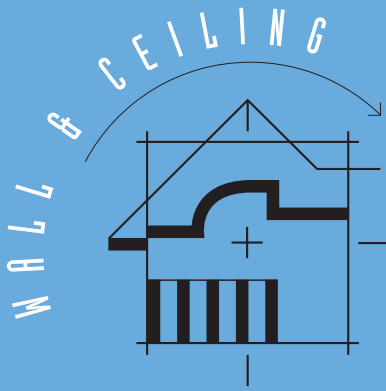


LINEAR

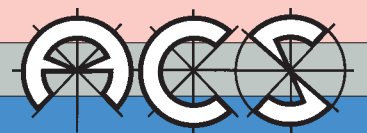


**CORULINE™**

Y  
S  
T  
E  
M  
S



A Modern Revival  
of the turn of the Century  
Wall and Ceiling Linings



Architectural Ceiling  
Systems Pty Ltd

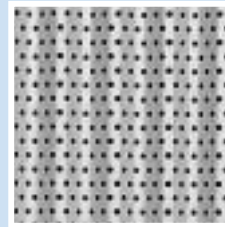
## The first of a new range of Perforated and Unperforated Ceilings and Wall Linings

Turn of the Century, miniature corrugated metal lining material revived in system form.

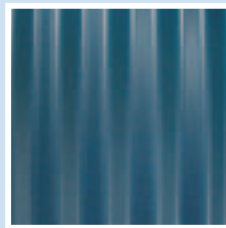
- Colorbond Zincalume
  - Clear Lacquered Zincalume provides 'Authentic look' finishes.
  - Stoved Enamel (non standard colours)
  - Aluminum Anodised or Painted.
- 
- Concealed Fixing
  - Perforated and Unperforated
  - Minimal end joins
  - Low traditional profile
  - Purpose rolled lengths
  - Acoustic or non-acoustic
  - Strong Machine Curve Rolled Carriers
- 
- Curved, Flat and Raking Ceiling and Walls
  - Suspended or direct fixed
  - Decorative Finishes



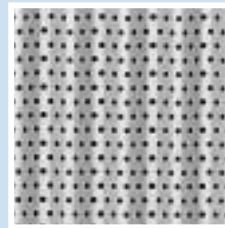
ANODIZED OVER ALUMINIUM



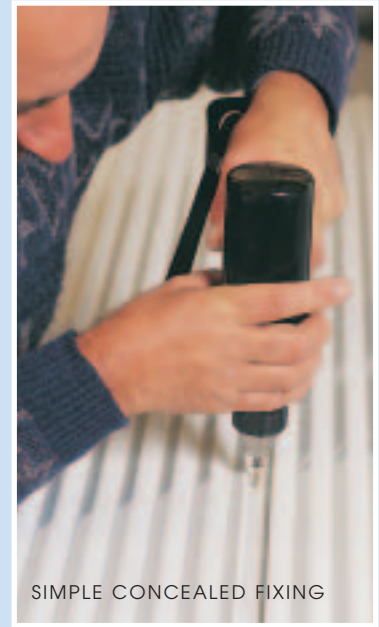
PERFORATED ALUMINIUM



COLORBOND OVER ZINCALUME



CLEAR LACQUER OVER ZINCALUME



SIMPLE CONCEALED FIXING

## ORIGIN

Coruline™ was conceived as a revival of a convenient cladding of yesteryear which we now find appeals to the specifier and client for the most modern of building applications. The inherent strength developed by such a profile provides many potential uses not realised in earlier times.

In fact, its strength and usefulness in a great variety of aesthetic and practical ways leads us all to appreciate the ingenuity of our remarkable forebears. Its appearance is the same as its predecessor, however, our 'state of the art' rolling and perforating tooling provides long lengths of panel product. The aesthetic appeal of secret fixings and other benefits of the Coruline System enable it to be used in

applications of ceilings, walls and including external soffits.

Installed in accordance with the manufacturers recommendations Coruline™ could be used in detention centres and areas of high wear and tear with interesting effect.

### ZINCALUME

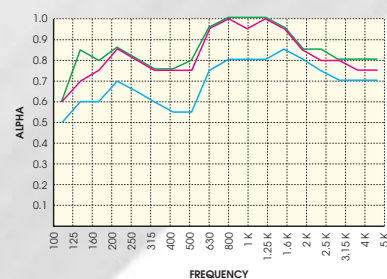
Colorbond • Clear Lacquer Baked Enamel • Powder Coat

### ALUMINIUM

Baked Enamel • Powder Coat

### ACOUSTIC ASSESSMENT

Acoustic Performance - Laboratory Tests Available



- 1 NRC = 0.70 PERFORATED + 25MM BTF
- 2 NRC = 0.85 PERFORATED + 50MM BTF
- 3 NRC = 0.90 PERFORATED + 75MM BTF

## A Popular Material Revival

OPTION

FEATURE

APPLICATIONS

DEPTH: 7.5MM NOM.

PRODUCT PROFILE



## A RETURN TO A PAST CONCEPT USING MODERN SYSTEMISED TECHNOLOGY

Coruline sheeting shall be installed strictly in accordance with the manufacturers recommendations and the installer shall be responsible for the neatness and strength of the overall installation. Generally, provide ACS P/No. 4 black faced universal carrier rails spaced 1200mm\* apart and spanning not more than 1800mm\* between hangers. Hangers shall be 25x25 angle compression hangers as supplied by the manufacturer and shall be Tek screwed to purlins and ACS P/No. 4 carriers.

Fix Coruline face panels (perforated or unperforated) 160mm wide\*\* by means of screws or rivets as recommended by the manufacturer through the fixing flange on one side of face panel. Continue to install face panels applying edge pressure on each panel appropriate to achieve a firm fixing. Face panels shall be standard 'Colorbond' Off White\*\*\* and shall be corrugated to provide 6 ribs per panel. All fixings and raw metal edges shall be concealed. Coruline face panels shall be perforated with 3mm diam. holes at 7mm crs. in a diagonal pattern. Perforations shall cover a width of 120mm of each face

panel leaving 40mm unperforated at the side junction of each of the panels. Acoustic and thermal insulation, to a thickness of (25, 50 or 75mm) shall be black faced with non woven scrim or black polyester of an appropriate density and finish, which is to be laid over ceiling panels between the up-stand legs of the carrier rails. Wall Trims to be ACS P/No. 21 Aluminium Wall angle in back enamel finish matching colour, securely fastened to walls at 600mm centres.

### NOTES:

\* Security ceiling applications may require carrier rails to be installed at 600mm centres and spans reduced considerably.

\*\* The 160mm module width of face panels may vary slightly, say 0.5 to 1mm depending upon metal type and installer practice.

\*\*\* Standard Coruline face panels are as follows:- Standard White Colorbond over Zincalume steel of 0.40mm thickness (BMT).

Other metal (such as Aluminium), metal thickness and colours may be requested from the manufacturer by the specifier.

For the installation of Coruline in recreation centres of all types the added advantage of neat face "stitching" at strategic points should be discussed with the manufacturer.

Flexibility in

PATENTED

# REPRESENTATIVE OFFICES



## AUSTRALIA

Specialised Ceiling Systems Pty Ltd  
715 - 717 Port Road  
Woodville Park SA 5012  
Ph: (08) 8268 6322  
Fx: (08) 8268 6083

Ceilings By Design  
1 / 24 Porter Street  
Hemmant Qld 4174  
Ph: (07) 3890 7600  
Fx: (07) 3890 7622

Solarshield Ceilings  
3 St James Place  
Seven Hills NSW 2147  
Ph: (02) 9620 9655  
Fx: (02) 9620 9799

Melbourne Building Supplies  
2 - 6 McWilliam Street  
Springvale Vic 3171  
Ph: (03) 9562 3711  
Fx: (03) 9562 4077

## MALAYSIA

Perangasang Remuda  
No. 27 Jalan 5 / 76B Desan Pandan  
55100 Kuala Lumpur Malaysia  
Ph: (603) 9281 4643  
Fx: (603) 9281 6648

## HONG KONG

Chevalier Ltd  
3/F, 21 Sheung Yuet Road  
Kowloon Bay, Hong Kong  
Ph: (852) 2 111 4709  
Fx: (852) 2 798 0432

## SINGAPORE

Framework Building Products  
No. 2 Aljunied Avenue 1  
Singapore 389977  
Ph: (65) 6861 5838  
Fx: (65) 6861 3387

## UNITED ARAB EMIRATES

Khalidia Intersystems  
PO Box 46554  
Abu Dhabi U.A.E.  
Ph: (971) 2 679 5497  
Fx: (971) 2 679 4030

## NEW ZEALAND

Forman Building Systems  
20 Vestey Drive  
Mt Wellington Auckland  
Ph: (649) 276 4000  
Fx: (649) 276 4141

Architectural Ceiling Systems has constructed a state of the art Acoustic Laboratory in Western Australia for use by all industry Australia wide and Internationally. It's designed to carry out a full range of acoustic tests, including sound absorption, sound power and sound transmission loss performance of Ceiling Systems and room to room sound loss in accordance with AS 2499.



# ARCHITECTURAL CEILING SYSTEMS PTY LTD

INCORPORATED IN WESTERN AUSTRALIA  
ABN 86 008 782 161

CEILINGS DESIGN, MANUFACTURE  
INSTALLATION & CONSULTANT SERVICES

HEAD OFFICE: 1-3 Irvine Street (P.O. Box 93)  
Bayswater, Western Australia 6053

Telephone: (08) 9271 0777

Fax: Nat. (08) 9272 2801, Inter. + 61 8 9272 2801

Website: [www.architecturalceilingsystems.com.au](http://www.architecturalceilingsystems.com.au)

Email: [acoustics@architecturalceilingsystems.com.au](mailto:acoustics@architecturalceilingsystems.com.au)

Distributor: