



METALWORKS™ Mesh™

Inspiring Great Spaces™

**Armstrong**®  
CEILING SYSTEMS



you inspire™  
solutions center

NEED A UNIQUE SOLUTION?

The You Inspire™ Solutions Center team will collaborate with you on products, installation, and accessories to translate your inspiration into a truly beautiful space.

MetalWorks™ Mesh™ custom item 6420 in Silver Grey with Prelude® XL® suspension system with Ultima® ceiling panels

METALWORKS™  
Mesh™



## intertwine your design

The industry's broadest portfolio of standard Mesh ceilings allows you to weave, weld, and expand. Should your imagination exceed the norm, bend the rules with our custom capabilities.

**Weave a new tale.** Whether you follow a linear road or hopscotch the squares, your woven story can have a colorful conclusion. Eleven standard designs and seven finishes provide the possibilities.

**Weld a work of art.** Sculpt a modern masterpiece with three welded designs available in seven flashy finishes.

**Expand your horizons.** Climb the lattice or ride a waterfall's cascade with four expanded metal patterns in nine finishes.



Square Weave  
Twin Round  
Narrow



Square Weave  
Twin Flat Narrow



Welded Wire  
2Cell



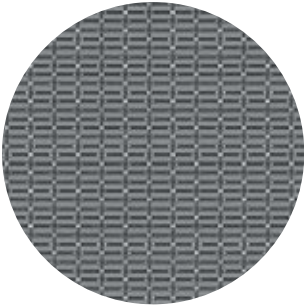
Expanded Metal  
Scallops

# METALWORKS™ Mesh™

Lay-in

## Woven Wire (1:3 scale shown)

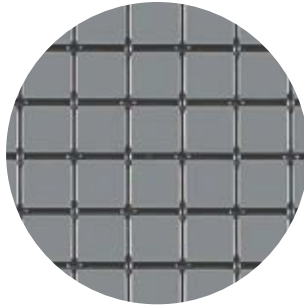
### Linear Weave



#### Single Mini

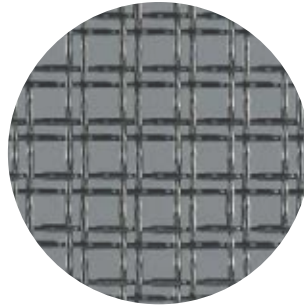
Item 6413AM  
Warp Spacing (pattern): 0.3125"  
Fill Spacing (pattern): 0.143"  
Warp Wire Diameter: 0.063"  
Fill Wire Diameter: 0.063"  
% Open Area: 57%

### Square Weave



#### 1Cell

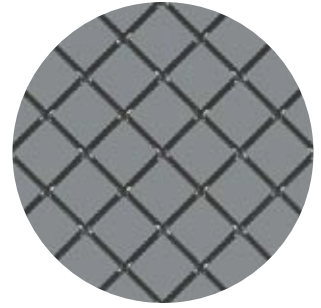
Item 6415AM  
Warp Spacing (pattern): 0.855"  
Fill Spacing (pattern): 0.855"  
Warp Wire Diameter: 0.105"  
Fill Wire Diameter: 0.105"  
% Open Area: 76%



#### Twin Round Narrow

Item 6129AM  
Warp Spacing (pattern): 0.25"/0.57"/0.25"/0.57"  
Fill Spacing (pattern): 0.25"/0.57"/0.25"/0.57"  
Warp Wire Diameter: 0.080"  
Fill Wire Diameter: 0.080"  
% Open Area: 61%

### Diamond Weave



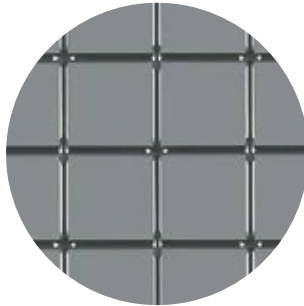
#### 1Diamond

Item 6417AM  
Warp Spacing (pattern): 0.855"  
Fill Spacing (pattern): 0.855"  
Warp Wire Diameter: 0.105"  
Fill Wire Diameter: 0.105"  
% Open Area: 76%



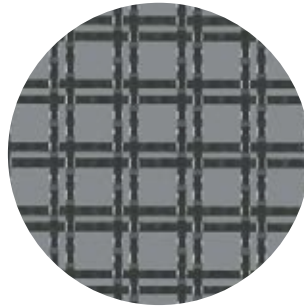
#### Single Narrow

Item 6414AM  
Warp Spacing (pattern): 0.105"  
Fill Spacing (pattern): 0.25"  
Warp Wire Diameter: 1.105"  
Fill Wire Diameter: 1.105"  
% Open Area: 52%



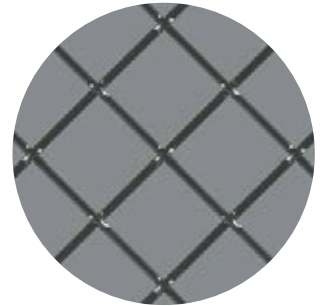
#### 2Cell

Item 6416AM  
Warp Spacing (pattern): 1.387"  
Fill Spacing (pattern): 1.387"  
Warp Wire Diameter: 0.135"  
Fill Wire Diameter: 0.135"  
% Open Area: 82%



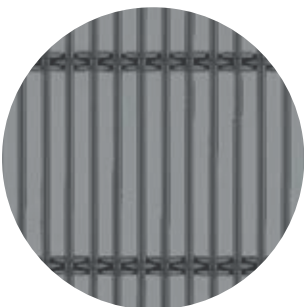
#### Twin Flat Narrow

Item 6412AM  
Warp Spacing (pattern): 0.25"/0.75"/0.25"/0.75"  
Fill Spacing (pattern): 0.25"/0.75"/0.25"/0.75"  
Warp Wire Dia. (crushed): 0.092"  
Fill Wire Dia. (crushed): 0.092"  
% Open Area: 53%



#### 2Diamond

Item 6418AM  
Warp Spacing (pattern): 1.326"  
Fill Spacing (pattern): 1.326"  
Warp Wire Diameter: 0.135"  
Fill Wire Diameter: 0.135"  
% Open Area: 82%



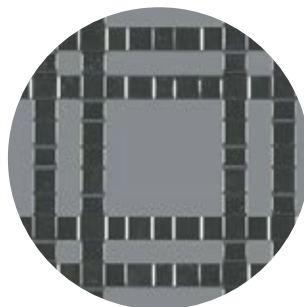
#### Triple Narrow

Item 6128AM  
Warp Spacing (pattern): 3.15"  
Fill Spacing (pattern): 0.386"  
Warp Wire Diameter: 0.12"  
Fill Wire Diameter: 0.092"  
% Open Area: 62%



#### Single Flat Narrow

Item 6411AM  
Warp Spacing (pattern): 0.25"  
Fill Spacing (pattern): 0.25"  
Warp Wire Dia. (crushed): 0.092"  
Fill Wire Dia. (crushed): 0.092"  
% Open Area: 21%



#### Twin Flat Wide

Item 6410AM  
Warp Spacing (pattern): 0.75"/2.25"/0.75"/2.25"  
Fill Spacing (pattern): 0.75"/2.25"/0.75"/2.25"  
Warp Wire Diameter: 0.375" x 0.60"  
Fill Wire Diameter: 0.375" x 0.60"  
% Open Area: 56%

**Welded Wire** (1:3 scale shown)



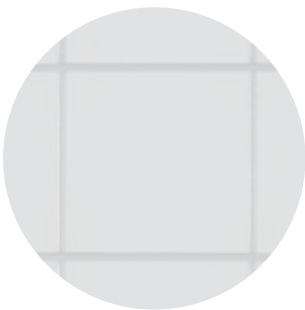
**1Cell**

Item 6131AM  
 Warp Spacing (pattern): 1.00"  
 Fill Spacing (pattern): 1.00"  
 Warp Wire Diameter: 0.120"  
 Fill Wire Diameter: 0.120"  
 % Open Area: 78%



**2Cell**

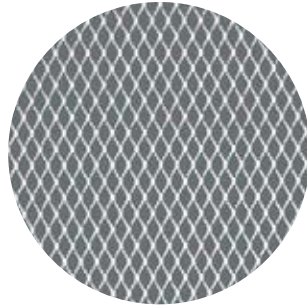
Item 6132AM  
 Warp Spacing (pattern): 2.00"  
 Fill Spacing (pattern): 2.00"  
 Warp Wire Diameter: 0.120"  
 Fill Wire Diameter: 0.120"  
 % Open Area: 88%



**3Cell**

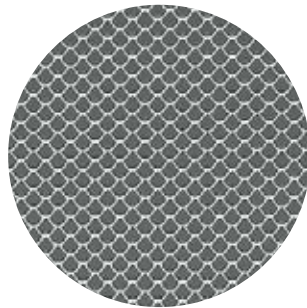
Item 6133AM  
 Warp Spacing (pattern): 3.00"  
 Fill Spacing (pattern): 3.00"  
 Warp Wire Diameter: 0.120"  
 Fill Wire Diameter: 0.120"  
 % Open Area: 92%

**Expanded Metal** (1:3 scale shown)



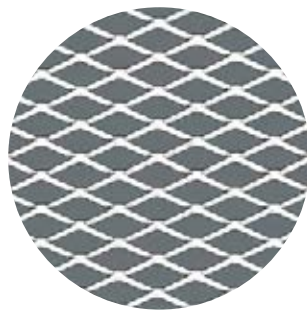
**Lattice**

Item 6136AM  
 Thickness: 0.036"  
 SWD: 0.250"  
 LWD: 0.500"  
 SWO: 0.174"  
 LWO: 0.400"  
 % Open Area: 75%



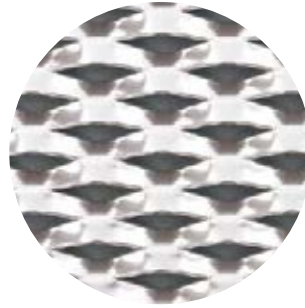
**Scallops**

Item 6137AM  
 Thickness: 0.048"  
 SWD: 0.295"  
 LWD: 0.394"  
 SWO: 0.210"  
 LWO: 0.250"  
 % Open Area: 61%



**Trellis**

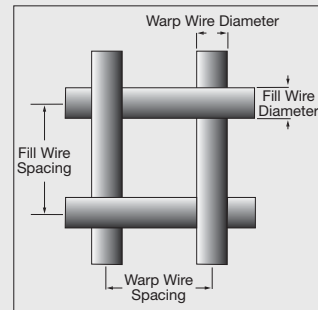
Item 6138AM  
 Thickness: 0.060"  
 SWD: 0.515"  
 LWD: 1.200"  
 SWO: 0.355"  
 LWO: 1.000"  
 % Open Area: 70%



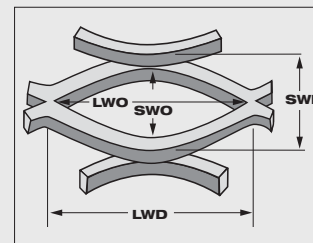
**Cascades**

Item 6139AM  
 Thickness: 0.080"  
 SWD: 0.950"  
 LWD: 2.000"  
 SWO: 0.200"  
 LWO: 1.125"  
 % Open Area: 23%

**Woven & Welded Wire Key**

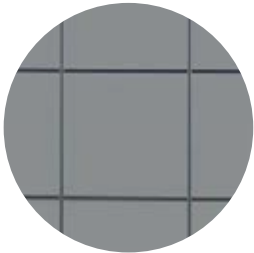


**Expanded Metal Key**

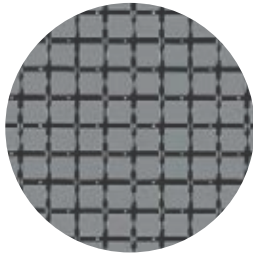


SWD – Short Way of Design  
 LWD – Long Way of Design  
 SWO – Short Way of Opening  
 LWO – Long Way of Opening

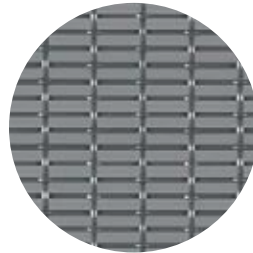
Custom Patterns\* (1:3 scale shown, unless otherwise noted)



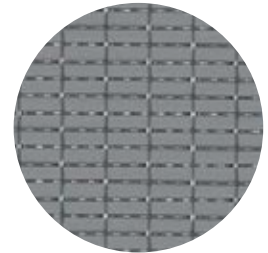
Item 6419 (1:6 scale shown)



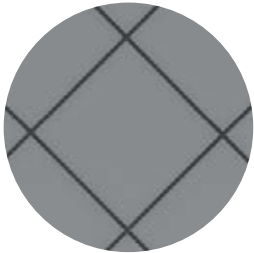
Item 6424



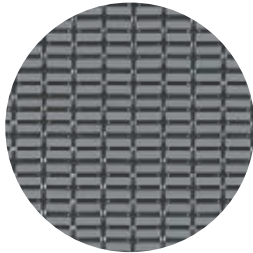
Item 6429



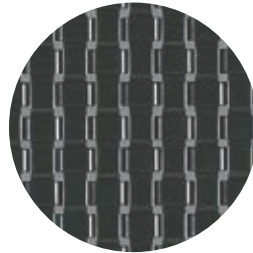
Item 6434



Item 6420 (1:6 scale shown)



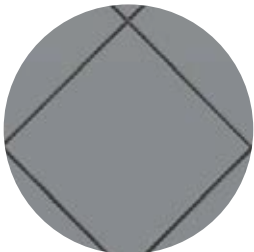
Item 6425



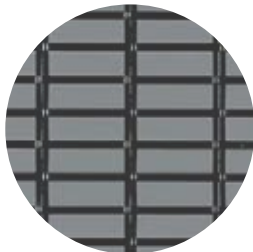
Item 6430



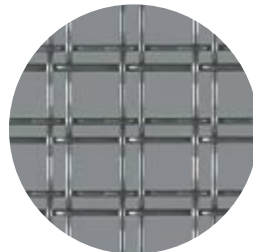
Item 6435 (1:6 scale shown)



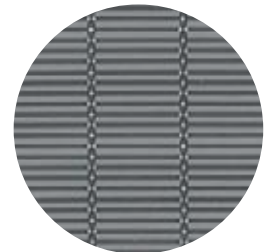
Item 6421 (1:6 scale shown)



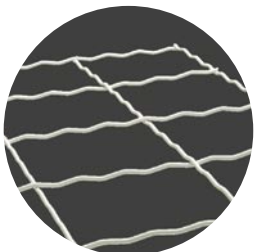
Item 6426



Item 6431



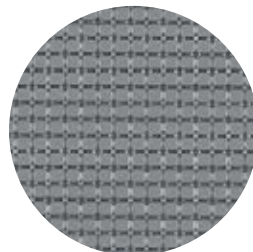
Item 6436



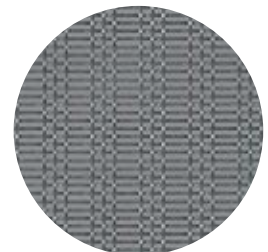
Item 6422



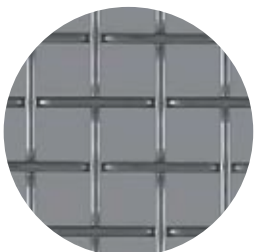
Item 6427



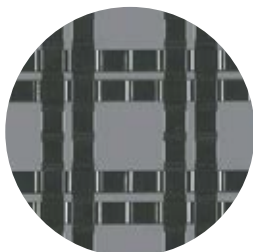
Item 6432



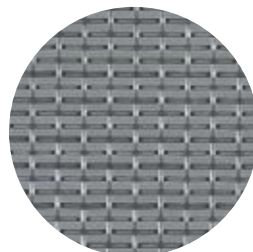
Item 6437



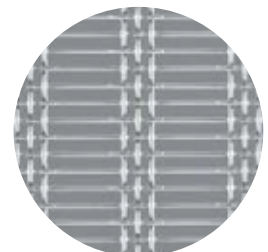
Item 6423



Item 6428



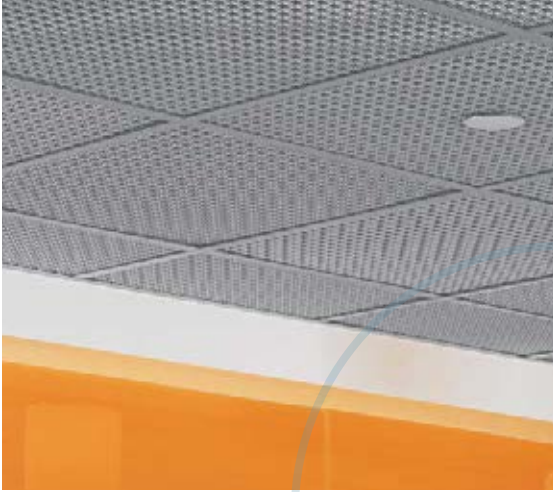
Item 6433



Item 6438 (1:6 scale shown)

NOTE: Custom patterns are available in all standard colors except Bright and Natural Anodized.

\* Minimum quantities and extended lead times may apply. For more information, visit our website at [armstrong.com/metalworks](http://armstrong.com/metalworks) or call 1 877 ARMSTRONG.



## TESTIMONIAL

**Project:** AXA Equitable  
**Location:** New York, NY  
**Product:** MetalWorks™ Mesh™

“We chose the MetalWorks Mesh product in a Nickel Chrome finish to add textural dimension and reflectivity to the ceiling, which enlivened the space. Another major factor for us was the ability to give the space added vertical dimension through the dark rendering of the open ceiling above. Due to the large range of choices of finish, we were able to seamlessly integrate the product into our overall finish scheme.

The AXA users have been delighted with the space and have used it far more, and for more events than they originally expected.”

*Lawrence Friedberg  
Senior Associate – RA, NCARB  
The Switzer Group  
New York, NY*



MetalWorks™ Mesh™ Square Weave Twin Round Narrow panels in Nickel Chrome with Prelude® XL® 15/16" suspension system in Gun Metal Grey; AXA Equitable, New York, NY

# METALWORKS™ Mesh™

Lay-in



MetalWorks™ Mesh™ Square Weave panels in Nickel Chrome with Prelude® XL® 15/16" suspension system



See more photos at:  
[armstrong.com/photogallery](http://armstrong.com/photogallery)  
 SEARCH: metalworks mesh

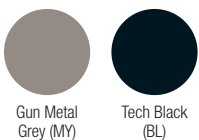
Standard system provides a contemporary, open feel in 18 standard designs.

## KEY SELECTION ATTRIBUTES

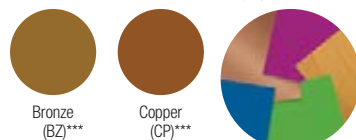
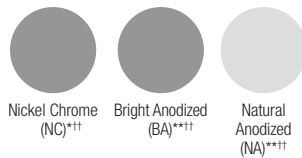
- Eighteen standard designs on 24" x 24" ceiling panels
- Variety of standard colors, plus custom colors available
- Flexible design – use as accent borders, clouds, or full ceilings
- Simple and safe installation – panels lay in standard 15/16" suspension system with borders or finished edges
- Can be used in Formations™ clouds

## MESH / SUSPENSION SYSTEM COLORS

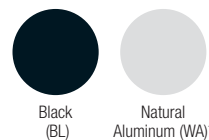
Available on All Panels:



Available on Select Panels:



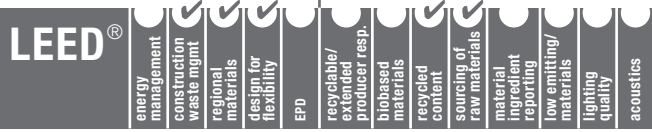
Coordinating Suspension System Colors:



Due to printing limitations, shade may vary from actual product.

- \* Not available on Cascades
- \*\* Only available on Cascades
- \*\*\* Premium options
- † Only available as a coordinating suspension system color
- †† Not available as a coordinating suspension system color








# METALWORKS™ Mesh™

Lay-in

## VISUAL SELECTION

Edge Profile	Item Number*	Description	Panel Dimensions (Inches)	Interior Pattern Dimensions (Inches)
<b>WOVEN WIRE</b>				
Square Weave				
	6129AM __	Twin Round Narrow	24 x 24 x 1/4"	0.25"/0.57"/0.25"/0.57"
	6410AM __	Twin Flat Wide	24 x 24 x 1/4"	0.75"/2.25"/0.75"/2.25"
	6411AM __	Single Flat Narrow	24 x 24 x 1/4"	0.25 x 0.25"
	6412AM __	Twin Flat Narrow	24 x 24 x 1/4"	0.25"/0.75"/0.25"/0.75"
	6415AM __	1Cell	24 x 24 x 1/4"	0.855 x 0.855"
	6416AM __	2Cell	24 x 24 x 1/4"	1.387 x 1.387"
Linear Weave				
	6413AM __	Single Mini	24 x 24 x 1/4"	0.3125 x 0.143"
	6414AM __	Single Narrow	24 x 24 x 1/4"	1.105 x 0.25"
	6128AM __	Triple Narrow	24 x 24 x 1/4"	3.15 x 0.386"
Diamond Weave				
	6417AM __	1Diamond	24 x 24 x 1/4"	0.855 x 0.855"
	6418AM __	2Diamond	24 x 24 x 1/4"	1.326 x 1.326"
<b>WELDED WIRE</b>				
Square Lay-in				
	6131AM __	1Cell	24 x 24 x 1/4"	1 x 1"
	6132AM __	2Cell	24 x 24 x 1/4"	2 x 2"
	6133AM __	3Cell	24 x 24 x 1/4"	3 x 3"
<b>EXPANDED METAL</b>				
Square Lay-in				
	6136AM __	Lattice	24 x 24 x 1/4"	SWD 0.250", LWD 0.500"
	6137AM __	Scallops	24 x 24 x 1/4"	SWD 0.295", LWD 0.394"
	6138AM __	Trellis	24 x 24 x 1/4"	SWD 0.515", LWD 1.200"
	6139AM __	Cascades	24 x 24 x 1/4"	SWD 0.950", LWD 2.000"

\* When specifying or ordering, include the appropriate 2-letter color suffix with the item number (e.g., 6129AM S G).  
 SWD = Short way of design LWD = Long way of design  
 NOTE: For acoustical infill panel information, see catalog pg. 100.

## PERFORMANCE

Dots represent high level of performance.

% Open Area	Fire Rating	Durability			
		Wash	Scrub	Impact	Soil
61%	Class A	•	•	•	•
56%	Class A	•	•	•	•
21%	Class A	•	•	•	•
53%	Class A	•	•	•	•
76%	Class A	•	•	•	•
82%	Class A	•	•	•	•
57%	Class A	•	•	•	•
52%	Class A	•	•	•	•
62%	Class A	•	•	•	•
76%	Class A	•	•	•	•
82%	Class A	•	•	•	•
78%	Class A	•	•	•	•
88%	Class A	•	•	•	•
92%	Class A	•	•	•	•
73%	Class A	•	•	•	•
61%	Class A	•	•	•	•
70%	Class A	•	•	•	•
23%	Class A	•	•	•	•

## SUSPENSION SYSTEMS

(See catalog pgs. 279-280 for Prelude® XL® components. See catalog pgs. 271-272 for 360° Painted Grid components.)

15/16"



Prelude XL

## PHYSICAL DATA

### Material

All items, except Cascades panels, are cold-rolled steel. Cascades panels are made of aluminum.

### Surface Finish

Available finishes include a range of smooth, factory-applied powder-coated (post-coated) finishes. Anodized finishes (BA, NA) on Cascades panels only.

### Fire Performance

ASTM E84 and CAN/ULC S102. Flame Spread Index 25 or less. Smoke Developed Index 50 or less.

All MetalWorks™ Mesh™ panels are non-combustible. As with other architectural features located at the ceiling, Mesh panels may obstruct or skew the planned fire sprinkler water distribution pattern, or possibly delay or accelerate the activation of the sprinkler or fire detection systems by channeling the heat from a fire either toward or away from the device.

For panels that do not meet the criteria for open-suspension system ceilings as defined by NFPA 13, a 24" x 24" mineral fiber panel should be placed on the back of the Mesh panel when installing the ceiling, with the sprinkler installed below both panels. (Fine Fissured™ item 1728BL is an acceptable lay-in product for this use.)

Designers and installers are advised to consult a fire protection engineer, NFPA 13, and local codes for guidance where automatic fire detection and suppression systems are present.

### Design Considerations

For more open MetalWorks Mesh items where the suspension system may be visible through the panels, consider using a 360° Painted Grid System coordinated with the panel color.

### Installation Considerations

Hold down clips may be required in some installations, see pages 293-294. The edges of MetalWorks Mesh panels feature unique detailing. Use caution and wear appropriate hand and eye protection when installing

or cutting these metal panels. Refer to Installation Instructions BPLA-297075 at [armstrong.com/metalworks](http://armstrong.com/metalworks) for details and cutting recommendations.

### Warranty

Details at [armstrong.com/warranty](http://armstrong.com/warranty)

### Weight/Panel (Bulk Packed)

6128AM – 4.2 lbs; 6129AM – 6 lbs  
 6131AM – 4 lbs; 6132AM – 2.3 lbs  
 6133AM – 1.6 lbs  
 6410AM, 6412AM – 4.8 lbs  
 6136AM – 1.8 lbs; 6137AM – 2.8 lbs  
 6138AM – 1.7 lbs; 6138AM – 2.1 lbs  
 6411AM – 8.2 lbs; 6413AM – 5.1 lbs  
 6414AM – 6.9 lbs  
 6415AM, 6417AM – 3.3 lbs  
 6416AM, 6418AM – 3.2 lbs

### Minimum Order Quantity

160 Square Feet

## take the next step

### 1 877 ARMSTRONG (276-7876)

Customer Service Representatives  
7:45 a.m. to 5:00 p.m. EST  
Monday through Friday

**TechLine<sup>SM</sup>** – Technical information, detail drawings, CAD design assistance, installation information, other technical services – 8:00 a.m. to 5:30 p.m. EST, Monday through Friday. FAX 1 800 572 8324 or email: [techline@armstrong.com](mailto:techline@armstrong.com)

### [armstrong.com/commceilings](http://armstrong.com/commceilings)

Latest product news  
Standard and custom product information  
Online catalog  
CAD, Revit<sup>®</sup>, SketchUp<sup>™</sup> files  
A Ceiling for Every Space<sup>™</sup> Visual Selection Tool  
Product literature and samples – express service or regular delivery  
Contacts – reps, where to buy, who will install

### YOU INSPIRE<sup>™</sup> SOLUTIONS CENTER

1 800 988 2585  
email: [solutionscenter@armstrong.com](mailto:solutionscenter@armstrong.com)  
[armstrong.com/youinspire](http://armstrong.com/youinspire)

#### Design Assistance

Collaborative design  
Detail drawings  
Specifications  
Planning and budgeting

#### Pre-construction Assistance

Layout drawings for standard and premium products  
Project installation recommendations  
Contractor installation assistance

**you inspire<sup>™</sup>**  
solutions center

helping to bring your one-of-a-kind ideas to life

Cover Photo: MetalWorks<sup>™</sup> Mesh<sup>™</sup>  
Cascades panels in Natural Anodized with  
Suprafine<sup>®</sup> XL<sup>®</sup> 9/16" suspension system  
and angle molding in Silver Grey  
Evelyn Meador Library, Seabrook, TX



Printed on recyclable paper  
with vegetable-based inks.  
Please Recycle. ♻️

SketchUp<sup>™</sup> is a trademark of Trimble Navigation Limited; Revit<sup>®</sup> is a registered trademark of Autodesk, Inc.  
All other trademarks used herein are the property of AWI Licensing Company and/or its affiliates  
© 2016 AWI Licensing Company • Printed in the United States of America

[armstrong.com/metalworks](http://armstrong.com/metalworks)

Inspiring Great Spaces<sup>™</sup>

**Armstrong<sup>®</sup>**  
CEILING SYSTEMS