

**Promat**

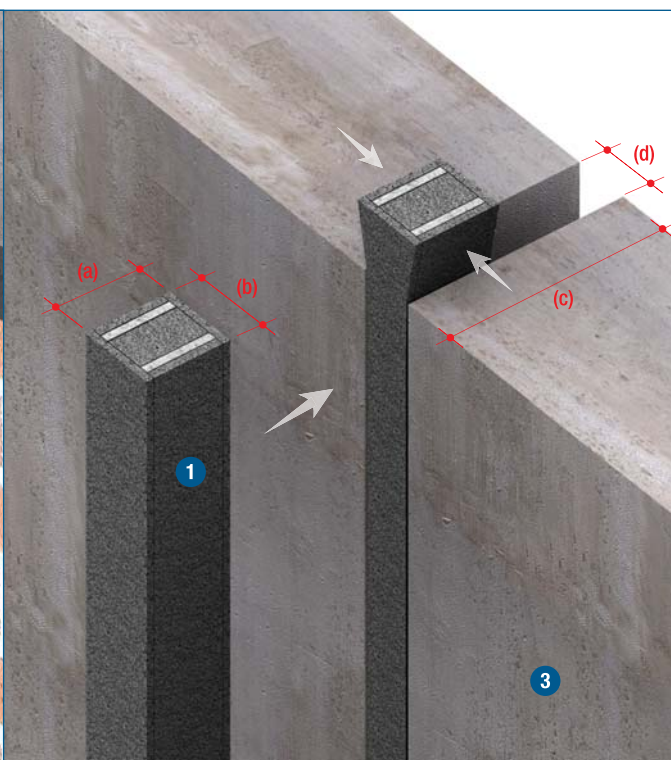


## **PROMASEAL® FyreStrip For Movement Joints Seals**



### SE 81.24.1

### SE 82.24.1



#### TECHNICAL DATA

**1** For FRL up to  $-/240/240$ , please consult Promat if integrity only, straps are required.  
PROMASEAL® FyreStrip

**2** Masonry or concrete floor slab, with fire resistance higher than or equal to that of the installed system.

**3** Masonry, concrete or brick wall, with fire resistance higher than or equal to that of the installed system.

PROMASEAL® FyreStrip is a compressible, flexible, fire resistant seal which is used where movement joints are formed in the structure of building. It consists of layers of intumescent material bonded to a special foam and has been successfully fire tested up to 240 minutes in joints within masonry or concrete walls and concrete floors in accordance with the relevant criteria of BS476: Part 20, AS1530: Part 4 and AS4072: Part 1.

PROMASEAL® FyreStrip is available in the following dimensions:

- FS20 – 90mm x 28mm x 1000mm;
- FS40 – 90mm x 46mm x 1000mm;
- FS50 – 90mm x 56mm x 1000mm;
- FS80 – 100mm x 84mm x 1000mm;
- FS100 – 120mm x 124mm x 1000mm.

The strips are ideal for sealing movement joints at junctions between compartment walls and floors. Their flexibility makes them suitable for use in a variety of configurations. The fire performance of PROMASEAL® FyreStrip will vary according to the particular application. In addition, the width of the gap into which the strip will be inserted as well as their orientation will have effect on the level of protection provided.

### Installation Guide

The strip thickness is determined by the minimum and maximum positions of the gap width expected during the life of the building. The strip thickness should not be less than the maximum expected width (see table on this page). The strip depth is a function of the gap width and the fire resistance period. The appropriate size of PROMASEAL® FyreStrip is simply compressed between fingers and thumb until it can be inserted into the required gap. For up to 240 minutes fire resistance only one strip is required. The strip must be centrally located in the wall or floor joint. In cold conditions it is advisable to store in a warm atmosphere immediately prior to installation as this improves compressibility. The strip may readily be cut to suit a particular length.

When more than one length of PROMASEAL® FyreStrip is required in a joint, ensure the two adjoining pieces are butted tightly and there is no gap between the adjoining ends. At the ends of each joint, ensure the strip is fitted tight to the adjacent surface.

For lower FRL, the thickness of the building element may well be less than specified below.

Code no.	FS20 (mm)	FS40 (mm)	FS50 (mm)	FS80 (mm)	FS100 (mm)
(a) Product depth	90	90	90	100	120
(b) Product width	28	46	56	84	124
(c) Minimum element thickness	For FRL up to $-/120/120$ For FRL up to $-/180/180$ For FRL up to $-/240/240$			120 150 170	
(d) Minimum gap width for strip insertion	16	24	32	48	64
Minimum gap width at full compression	12	16	24	36	44
Maximum gap width at full expansion	20	40	50	80	100

NOTE: For joints at the top of hollow block and cavity walls, the cavity must be sealed for a minimum of one course. In 120 minutes framed walls, the FRL can be achieved in joints up to a maximum of 50mm sealed with FS50 type. For situations not covered by the above table, please consult Promat.

### Recommended Specification

Where appropriate, the specified joints and gaps on floor/wall should be properly fire stopped using PROMASEAL® FyreStrip capable of providing a fire resistance of  $-/240/240$  when tested and assessed in accordance with AS1530: Part 4 and/or BS476: Part 20: 1987. Installation of any fire stopping product should be carried out according to the manufacturer's recommendations. Please consult Promat for more details.

For latest information of the Promat Asia Pacific organisation, please refer to [www.promat-ap.com](http://www.promat-ap.com)

## ASIA PACIFIC HEADQUARTERS

### Promat International (Asia Pacific) Ltd.

Unit 19-02-01, Level 2 PNB Damansara  
No.19 Lorong Dungun, Damansara Heights  
50490 Kuala Lumpur  
MALAYSIA  
Tel: +60 (3) 2095 5111  
Fax: +60 (3) 2095 6111  
Email: [info@promat-ap.com](mailto:info@promat-ap.com)

## AUSTRALIA

### Promat Australia Pty. Ltd.

1 Scotland Road  
Mile End South, SA 5031  
Tel: 1800 PROMAT (776 628)  
Fax: +61 (8) 8352 1014  
Email: [mail@promat.com.au](mailto:mail@promat.com.au)

### New South Wales Office

#### Promat Australia Pty. Ltd.

Unit 1, 175 Briens Road  
Northmead, NSW 2152  
Tel: 1800 PROMAT (776 628)  
Fax: +61 (2) 9630 0258  
Email: [mail@promat.com.au](mailto:mail@promat.com.au)

### Victoria Office

#### Promat Australia Pty. Ltd.

3/273 Williamstown Road  
Port Melbourne, VIC 3207  
Tel: 1800 PROMAT (776 628)  
Fax: +61 (3) 9645 3844  
Email: [mail@promat.com.au](mailto:mail@promat.com.au)

### Queensland Office

#### Promat Australia Pty. Ltd.

Unit 2 Level 1  
49 Gregory Tce  
Spring Hill, QLD 4000  
Tel: 1800 011 376  
Fax: 1800 334 598  
Email: [mail@promat.com.au](mailto:mail@promat.com.au)

## CHINA

### Promat China Ltd.

Room 503, Block B, Qi Lin Plaza  
13-35 Pan Fu Road  
510180 Guangzhou  
Tel: +86 (20) 8136 1167  
Fax: +86 (20) 8136 1372  
Email: [info@promat.com.cn](mailto:info@promat.com.cn)

### Beijing Office

#### Promat North China

(Division of Promat China Ltd.)

Room 1507 Building 5, SOHO Xiandaicheng  
No.88 Jianguo Road, Chaoyang District  
100022 Beijing  
Tel: +86 (10) 8589 1254  
Fax: +86 (10) 8589 2904  
Email: [info@promat.com.cn](mailto:info@promat.com.cn)

## HONG KONG

### Promat International (Asia Pacific) Ltd.

Room 1010, C.C. Wu Building  
302-308 Hennessy Road  
Wanchai  
Tel: +852 2836 3692  
Fax: +852 2834 4313  
Email: [apromath@promat.com.hk](mailto:apromath@promat.com.hk)

## INDIA

### Promat International (Asia Pacific) Ltd.

(India Representative Office)

610-611, Ansal Imperial Tower  
C-Block, Community Centre  
Naraina Vihar, Naraina  
110028 New Delhi  
Tel: +91 (11) 2577 8413  
Fax: +91 (11) 2577 8414  
Email: [info-india@promat-asia.com](mailto:info-india@promat-asia.com)

### Bangalore Office

#### Promat International (Asia Pacific) Ltd.

(India Representative Office)

Cabin No.BC-9 & BC-10  
Oculus Workspaces, No.66/1, 2nd Floor  
Coles Road, Frazer Town  
560005 Bangalore  
Tel: +91 (80) 4031 4151  
Fax: +91 (80) 4125 2135  
Email: [info-india@promat-asia.com](mailto:info-india@promat-asia.com)

### Mumbai Office

#### Promat International (Asia Pacific) Ltd.

(India Representative Office)

Stylus Serviced Offices  
Ground Floor, Velocity  
Phase 1, Logitech Park  
Andheri Kurla Road, Andheri East  
400072 Mumbai  
Tel: +91 (22) 6769 4567  
Fax: +91 (22) 6769 4568  
Email: [info-india@promat-asia.com](mailto:info-india@promat-asia.com)

## MALAYSIA

### Promat (Malaysia) Sdn. Bhd.

Unit 19-02-01, Level 2 PNB Damansara  
No.19 Lorong Dungun, Damansara Heights  
50490 Kuala Lumpur  
Tel: +60 (3) 2095 8555  
Fax: +60 (3) 2095 2111  
Email: [info@promat.com.my](mailto:info@promat.com.my)

## SINGAPORE

### Promat Building System Pte. Ltd.

10 Science Park Road, #03-14 The Alpha,  
Singapore Science Park II  
Singapore 117684  
Tel: +65 6776 7635  
Fax: +65 6776 7624  
Email: [info@promat.com.sg](mailto:info@promat.com.sg)

For Promat International groups worldwide:

[www.promat-international.com](http://www.promat-international.com)

1. This document is produced on the basis of information and experience available at the time of preparation. Promat is constantly reviewing and updating all of its test data and reserves the right to change products and specifications without notice.
2. Promat is not responsible if recipients of fire test reports, assessments or literature incorrectly interpret said contents and use products based on those interpretations.

Your local Promat supplier

